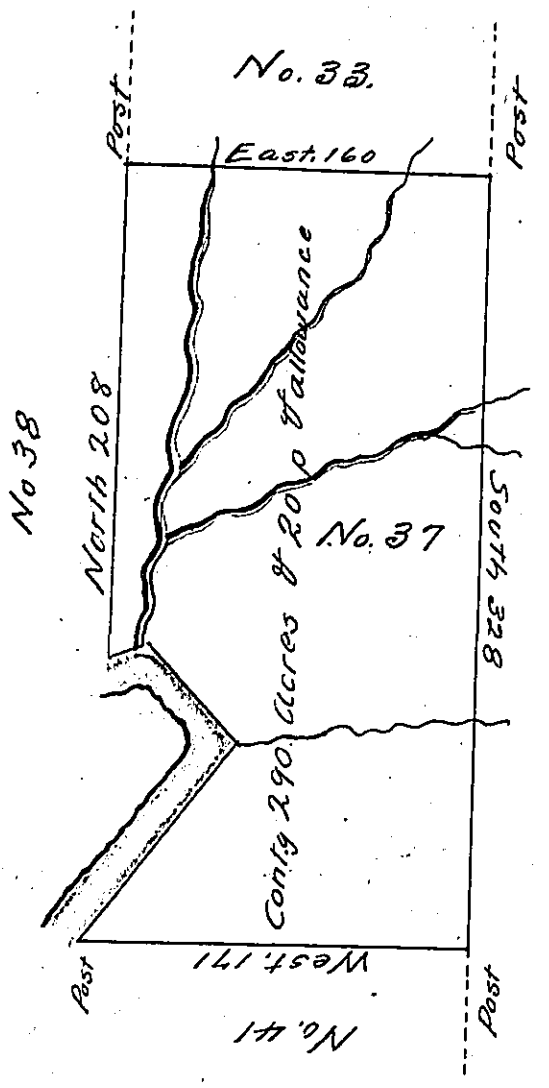


Courses and distances down Connoughqueanneasing Creek

Viz: N 37 1/2° E 107 ✓
N 39° W 23 ✓
N 48° W 32 ✓
S 73° N 18 ✓
180



Major Alexander's part of District No 3

Situate on the north side of Connoughqueanneasing Creek in that part of District No 3 to me allotted on the North side of the River Ohio being part of the Land appropriated for the Redemption of the Certificates of depreciation &c. Surveyed in June 1785, Pursuant to Instructions from Jno. Lukens Esqr. Surveyor Genl. Dated at Philad. the 5th day of March 1785

Nath. Breeding D.S.

IN TESTIMONY that the above is a copy of the original remaining on file in the Department of Internal Affairs of Pennsylvania, made conformably to an Act of Assembly approved the 16th day of February, 1833, I have hereunto set my Hand and caused the Seal of said Department to be affixed at Harrisburg, this twelfth day of March 1904

Luca R. ...
Secretary of Internal Affairs.